



MANTAROBOT

## MantaroBot™ TableTop TeleMe TelePresence Robot

### MantaroBot TableTop TeleMe Overview

The MantaroBot™ TableTop TeleMe TelePresence Robot is a portable platform where you can plug in your own Apple® devices or Android™ Tablet. The TableTop is perfect for use in conference rooms, on desktops, in conceirge or other environments as virtual receptionists, retail help desks, etc.

The TableTop TeleMe is controlled via an application that can be plugged into Skype™ or used with many other audio/video conferencing applications such as FaceTime, Google Hangouts, Cisco, Polycom, Vidyo, etc. The control application allows a user to remotely interact with customers, co-workers, and associates and their environment. The telepresence system provides a level of interactivity which is not present with traditional “call-in” video conference. The user can remotely control the tablet’s orientation and look around the entire room and observe participants through the tablet’s camera, allowing more effective communication. The user will be able to view live activities, meetings or hold one-on-one meetings. Provided they have a Windows PC, Mac, or a device with a modern web-browser and a network connection, any user can access the TableTop TeleMe TelePresence Robot.

The TableTop TeleMe requires no supervision excluding initial power-on. Onsite participants are able to communicate with the offsite user through the tablet’s display and camera. The base of the TableTop TeleMe includes powered speakers and a microphone that connect to the tablet via Bluetooth. The TableTop TeleMe can be configured to use Ethernet or WiFi. It can be powered from an AC adapter or an internal rechargeable battery. Skype (or your choice of video conferencing application) runs on the tablet providing high quality audio and video. A control interface runs on the user’s computer allowing full control of the TableTop and completes the audio/video call-in platform. The TableTop also features the ability to tilt the tablet up/down via the control interface providing a wide visual range and acuity. It can also pan the tablet head left or right (+/- 180 degrees) giving full 360 degree coverage of the room.



TableTop  
TeleMe™

plugged into  Skype



Holders

#### Features

- Desktop control application or web-controller can be used along side any audio/video conferencing applications for easy and intuitive control of the TableTop TeleMe.
- Application can control TeleMe using 3 choices of robot control paths: WebRTC, direct socket connection, or MantaroBot Communications Service (cloud service). Can also work on 802.1X networks that require security certificate.
- Holders currently available for the following: iPad®, iPhone®, Galaxy TAB™ 10.1. (Tablet/smartphone not included.)
- Red Laser pointer mounted on holder also follows tilt and pan allowing user to point to objects in room
- Password protection access control
- Optional battery allows “grab and go” functionality allowing telepresence meeting in any room or venue
- Powered speakers and microphone in base of the TableTop TeleMe
- Network connectivity via Bluetooth in Android tablets or through optional Ethernet or WiFi
- Optional floor base w/ mast extension for freestanding applications

#### Applications

- Hold an audio/video teleconference in conference rooms, on desktops, in conceirge or other environments as virtual receptionists, retail help desks, etc.
- Interact w/ customers, business associates, etc.
- Allows virtual attendance to events such as meetings or gatherings
- Use in retail stores to allow customers to discuss products with factory specialists
- Attend meetings while working from home
- Visit remote offices for team or one-on-one meetings
- Visit family members at home or at assisted-living facilities
- Remote customer service at hotels or shopping centers
- Use in health care to call in a specialist and assist with remote diagnosis

#### Benefits

- Enhance presence in meetings and get-togethers by providing enhanced virtual presence
- See and be seen in meetings



MantaroBot Corporation

20410 Century Blvd. – Suite 120, Germantown MD 20874

[www.MantaroBot.com](http://www.MantaroBot.com) [info@MantaroBot.com](mailto:info@MantaroBot.com) 301.528.2244

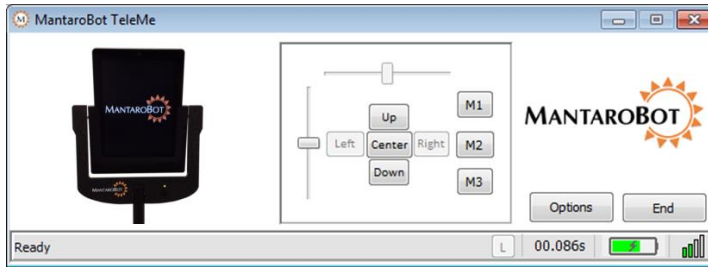
Version 1.2



## MantaroBot™ TableTop TeleMe TelePresence Robot

### Control User Interface

The TableTop TeleMe is controlled by the remote user via a control application that communicates with the TableTop TeleMe over a WebRTC, direct socket/VPN, or MantaroBot Communications Service connection to the TeleMe. The control interface is designed as a small control panel that provides separate control interfaces for the movement of the TableTop and pan/tilt of the tablet's integrated camera.



The tablet and its camera can be tilted/panned using the TableTop TeleMe control panel or via keyboard controls. The control panel also provides important status information including the condition of the communications link, WiFi signal strength, and battery charge state.

While you can use an Apple iPad with a TableTop that has Ethernet or WiFi connection, the TableTop can also be controlled using an Android Tablet with the Android version of the MantaroBot Controller App. (This does not require you to purchase the Ethernet or WiFi option for the TableTop). Once configured and connected this app operates in the background of the tablet allowing any audio/video telepresence software to be used in the foreground. The user can pan/tilt and control the laser while simultaneously using the audio/video conferencing software. Any audio/video telepresence software that has an Android version (Polycom, Cisco Jabber, Google Hangouts, Skype, etc.) can be used with the controller application.

### Software Specifications

#### Remote User Requirements

- Windows® XP, 7 or 8.x for MantaroBot™ Control Application
- Modern web-browser for web-based MantaroBot controller (WebRTC supported web-browser required for WebRTC control path)

### Hardware Specifications

#### Power

- AC Adapter for power or charging
- Tablet or smartphone will also be charged when TableTop TeleMe is plugged into AC adapter

#### Pan and Tilt

- Tablet holder "tilt" servo allows 85° down, 45° up viewing
- Motorized Pan allows +/- 180° pan (full 360° view)

#### Control Board

- Micro-controller drives pan/tilt servos and optional laser pointer
- Bluetooth radio for connectivity to Android Tablet allowing simplified network connectivity via tablet's WiFi radio

#### Optional Battery

- 3.7V - 2Ah rechargeable Lithium Ion Battery
- Battery life 4 hours (typical use)
- Power Saving Mode for even longer battery life

#### Optional Ethernet/WiFi connectivity

- Optional Ethernet and optional WiFi connectivity to TableTop TeleMe
- Allows non-Android devices to be used in the tablet holder
- Removes requirement for running TableTop robot control application on the tablet

#### Options

- Available holders for the following tablets and smartphones: (one standard holder included with initial order, additional can be ordered)
  - Apple iPad (Portrait / Landscape), iPhone (Portrait)
  - Samsung Galaxy TAB 10.1 (Landscape)
  - Landscape holders are required when audio/video application does not support portrait (e.g. Polycom or Cisco Jabber)
  - Others available upon request
- Red Laser Pointer – mounted on tilt/pan holder
- Floor base and 30" mast extension for freestanding applications

- \* Skype, associated trade marks and logos and the "S" logo are trade marks of Skype.
- \* Apple, Mac, iPad, and iPhone are trademarks of Apple Inc., registered in the U.S. and other countries.
- \* Android is a trademark of Google Inc.
- \* Samsung and Galaxy Tab are trademarks of Samsung Electronics Co., Ltd. and/or its related entities
- \* Windows is a registered trademarks of Microsoft Corporation in the United States and/or other countries.



MantaroBot Corporation

20410 Century Blvd. – Suite 120, Germantown MD 20874

[www.MantaroBot.com](http://www.MantaroBot.com) [info@MantaroBot.com](mailto:info@MantaroBot.com) 301.528.2244

Version 1.2